

# MONTHLY MEMBERSHIP PROGRESS REPORT

LOCATION INDIA

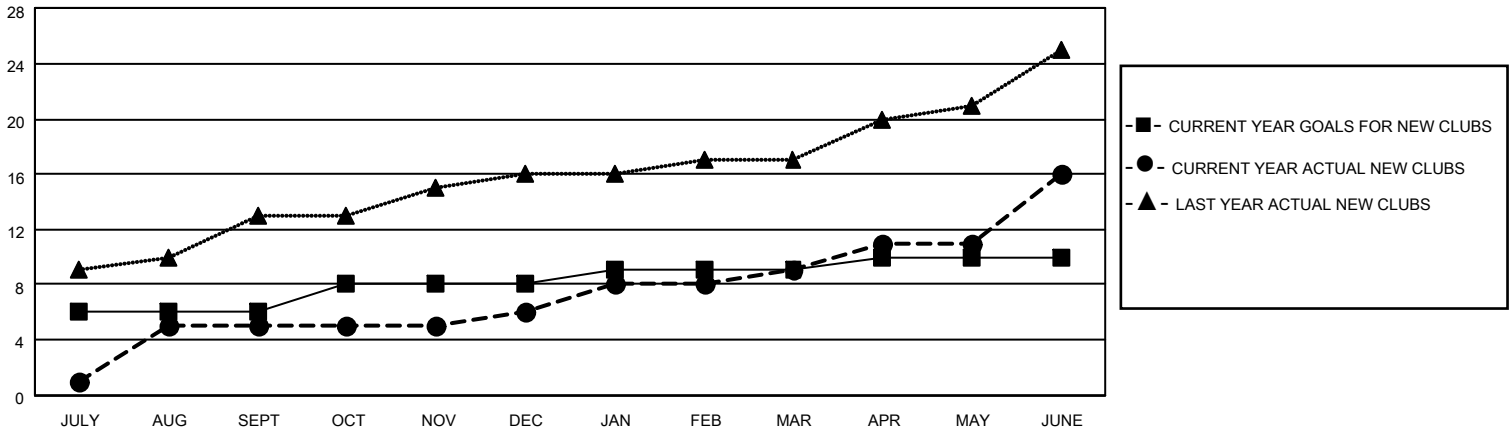
District 324 F

Results as of: 6/30/2023

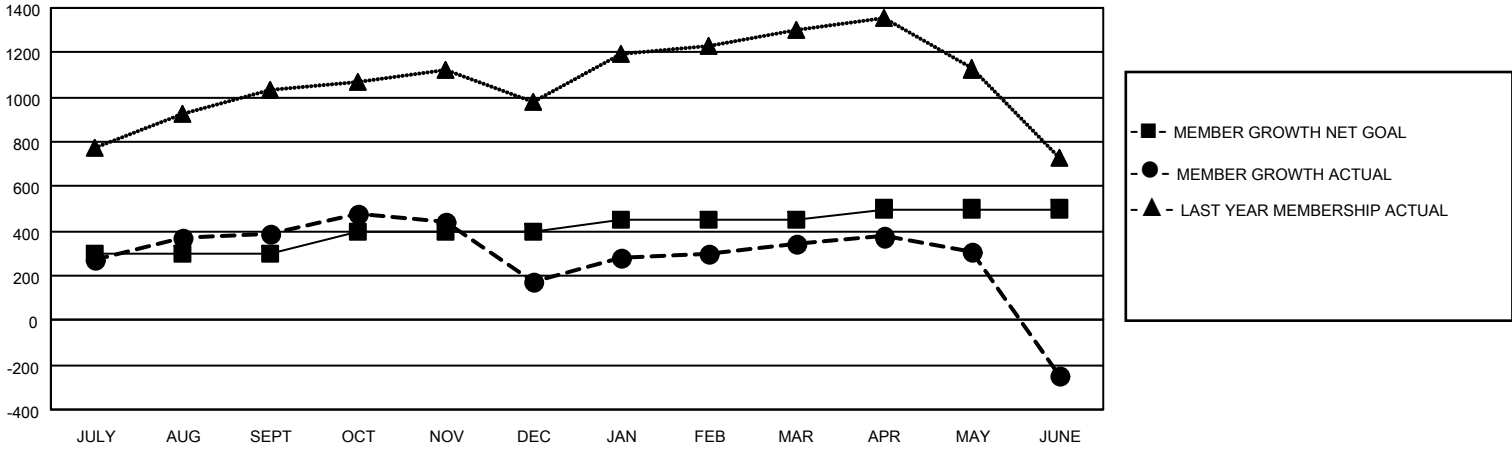
Clubs			
RESULTS FOR 2022-2023			
QUARTER	NEW CLUB GOAL	NEW CLUBS	DROPPED CLUBS
JULY/AUG/SEPT	6	5	1
OCT/NOV/DEC	2	1	5
JAN/FEB/MAR	1	3	3
APR/MAY/JUNE	1	7	3

Members			
RESULTS FOR 2022-2023			
QUARTER	MEMBER GROWTH NET GOAL	MEMBER GROWTH ACTUAL	DROPPED MEMBERS ACTUAL (including transfers)
JULY/AUG/SEPT	300	621	207
OCT/NOV/DEC	100	164	366
JAN/FEB/MAR	50	315	114
APR/MAY/JUNE	50	465	1,023

**GOALS AND ACTUAL NEW CLUBS CUMULATIVE**



**GOALS AND ACTUAL MEMBERS CUMULATIVE**



**DROPPED CLUBS: 12**

211 CLUBS OF 257 ADDED 1 OR MORE NEW MEMBERS

GENDER DISTRIBUTION

DROPPED MEMBERS

DECEASED	54
CLUB CANCELLED	281
OTHER	1,375
<b>TOTAL</b>	<b>1,710</b>

[CLICK HERE FOR CUMULATIVE MEMBERSHIP DATA](#)

MALE	8,783 (88.22%)
FEMALE	1,173 (11.78%)
NON BINARY	0 (0.00%)
PREFER NOT TO ANSWER	0 (0.00%)

TOTAL FAMILY UNIT MEMBERS 1,752

FAMILY MEMBERS PAYING HALF DUES 993